

## **DETAILS: IRENA V (151)& EXTENSION – Private Partener Residence**

### **Coordinates**

Boulevard du Triomphe 151/113 – 1050 Ixelles  
Access: ULB - Campus de la Plaine - Access 4 Bis  
Metro DELTA & Hankar - Bus 71 & 72 – Tram 7

**Tel: 00 32 2 646 21 83**

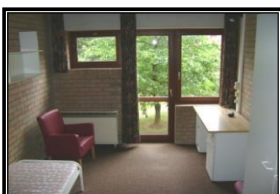
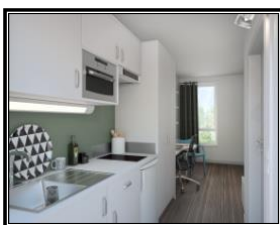
Fax: 00 32 2 646 07 11

Website: <http://eckelmans.com/civ/indexfr.html>

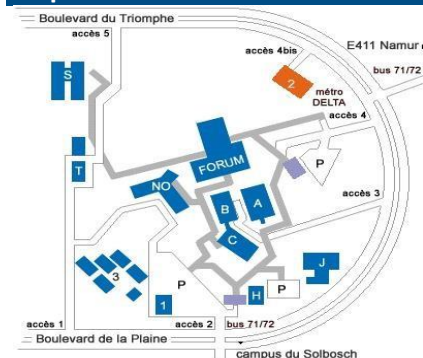
### **Contact**

Responsible: Madame Vervoort Pascale

E-mail: [agence.ixelles@eckelmans.com](mailto:agence.ixelles@eckelmans.com)



### **Map**



### **CAMPUS Irena V:**

546 furnished units including 9 flats, 13 duplexes and 2 PRM studios

### **Campus Irena EXTENSION:**

294 newly furnished units including 6 PMR and 2 large studios for 2 persons

The contracts are for 12 months

From 16 September to 15 September of the following year Private kitchen and bathroom with individual shower and WC

### **Costs:**

- **Studio: +/- 485€ to +/- 708€ (Large Studio)**
- **Duplex: +/- 797€ - Apartment: +/- 859€ to 905€**
- Utilities: included **except electricity** for Irena V but included for EXTENSION.
- Internet: contract to be taken from provider of choice
- Rental guarantee: studio: 750-950€.
- Guarantee: Duplex & flat: 1200/1250€.
- Access card: 20 euros/card
- FREE parking
- Liability insurance: Studio: 30€ - Large studio
- Duplex & Apartment: 45€ - Large Studio: 30€
- Inventory of fixtures fee: Studio: 40€ - Large Studio & Duplex: 45€ - Apartment: 55€

### **Services:**

- Secure entrance doors with badge and camera
- Technical maintenance provided
- Administrative office on site
- Concierge service (in case of emergency)
- Washing and drying machines (tokens to be purchased)
- Loan of hoovers on deposit of ID card
- Study room with FREE WIFI
- Activities run by the tenants' committee
- Cellar rental POSSIBLE

### **At the signature of the contract**

- Identity card or passport
- Student card or proof of enrolment at ULB
- Deposit document completed and signed and legalised by a guarantor (parent) + 3 salary slips
- Copy of the guarantor's identity card or passport
- Payment of the first month's rent, the guarantee and other fees (see rates)