

FICHE: Résidence Partenaire Privée - Les Estudines Ixelles

Coordonnées

Hors Campus - Gare d'Etterbeek

Les Estudines Ixelles

Avenue de la Couronne, 456

1050 Ixelles

Website: www.estudines.com

Contact

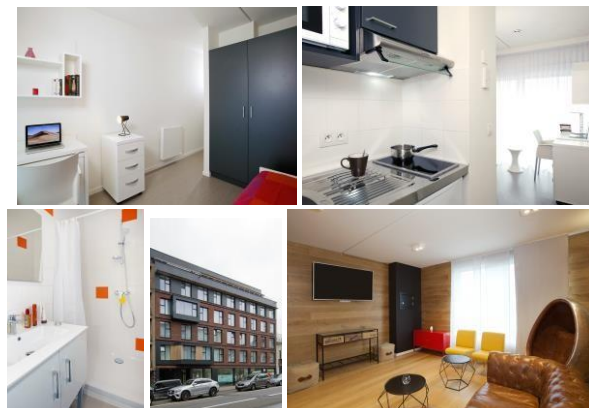
ixelles.bruxelles@estudines.com

00 32 (0)2/344.51.11

Map



Pictures



Description

- 83 furnished and equipped studios
- Immediate proximity to the Plaine and Solboch campuses, public transport (train, tram, bus) and shops
- New construction
- Fully secured site
- Fitness room
- Coworking rooms
- Relaxation area (TV corner, sofa, laundry area)
- Access for people with reduced mobility (PRM)

Costs

- Price of studios: **from 615€ + 75€** for fixed charges (all residence services plus internet) but tenants must take over the electricity meters in their name.
- Rental guarantee: 1 month

Contract

- Minimum length of contract: 5 months (1-year contract, but the student can leave earlier with 2 months' notice (Erasmus students accepted).

Services

- Wi-Fi
- Security: On-site presence and surveillance camera
- Private bicycle parking
- Cold drink dispensers
- Cleaning service for the common areas

Public transport

Etterbeek station stop
Bus 95, tram 7 and 25, train